

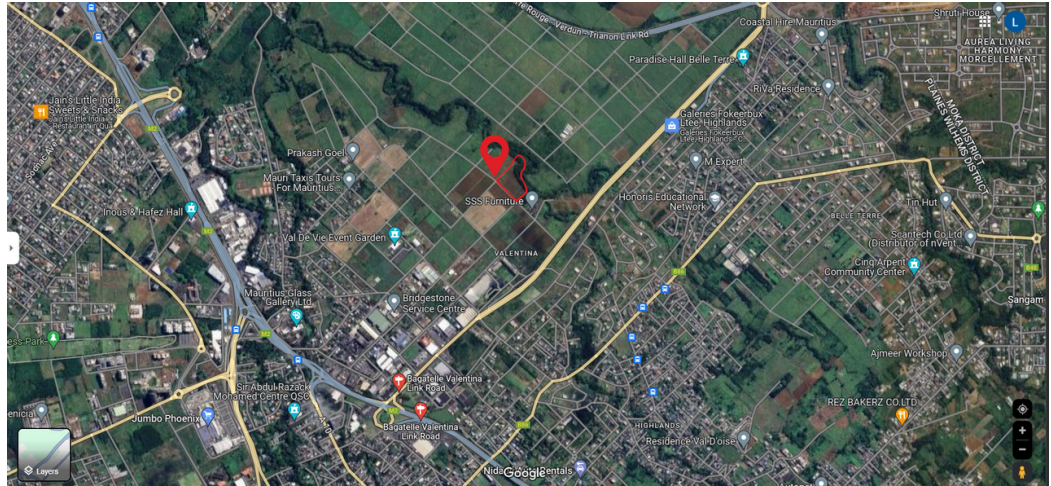


**Anne Sophie Paul**  
+23052555983  
annesophie.paul@rawson.mu

Contact Mauritius

+230 4842312

AG10, Ruisseau Creole Shopping Center,  
Coastal Road,  
Black River



Web Ref RL1221



Rs35,500,000

**Agro Industrial land For Sale - 3.34 Arpents**

Prime Agro-Industrial Land in Valentina DBM Industrial Estate, Petit Camp

Overview: Uncover a golden opportunity with this 14,097.37m<sup>2</sup> (3.34 Arpents) agro-industrial land located at the rear of the esteemed Valentina DBM Industrial Estate in Petit Camp.

**Key Features:**

1. Strategic Location: Situated in an agricultural area within the industrial estate, offering a perfect blend of convenience for endless possibilities.
2. Expansive Acreage: Boasting over 14,000 square meters (3.34 Arpents)
3. Proximity to Amenities: Enjoy the benefits of established infrastructure, utilities, and a supportive business environment, enhancing the property's appeal.

Investment Appeal: Capitalizing on the rising demand for this developing area, this property presents a lucrative investment opportunity.

Secure Environment: The...

**Features**

